

2

21 *1/2C3* *m* *i* *m* *3*

2 *1* *2* *1* *2* *a* *i*

1 *3* *4* *1* *3* *4* *2* *3* *2*

mp *sul tasto*

p

26 *m* *i* *m* *nat.* *C5*

1 *4* *4* *2* *0* *1* *2* *0* *2* *1* *3* *4* *1* *3* *4*

2 *3* *0* *3* *1* *3* *4* *3* *2* *1* *4* *3*

mf *nat.* *3* *2* *1* *p* *0* *0* *0*

C2 *3* *0* *4* *2* *3* *4* *4*

mf *6*

31 *1* *3* *4* *4* *1* *2* *m* *m* *C7*

1. *0* *2* *1* *1* *p* *i* *m*

3 *2* *4* *2* *3* *1* *4* *2* *4* *1*

mp *p*

36 *rit.* *Lento* $\text{♩} = 80$ *C7* *1/2C6* *C7*

2. *1* *2* *1* *4* *i* *2* *1* *4* *2* *p* *i*

1 *3* *2* *3* *5* *3* *1* *3* *4*

mp *mf* *espress.*

basso stacatto

40 $1/2C4$ $1/2C5$ *p i p m* 3

sfz *p*

p ad libitum

44 rit. Moderato $\text{♩} = 80$

p *mp* *mf* *dolce* *mp*

49

p *mf* *C3*

54 $1/2C5$ $1/2C5$ $1/2C5$ $1/2C5$

mp *C2* *C3*

4
59 $1/2C3$ $1/2C2$ 1 4 1 4 2 1 4 2

mp *mf* *mp* *f*

64 C3 C7 1. 1 4 4 2 4 2 1 2 $1/2C5$ 3 4

mp *mf* *mp* *p*

69 C7 1 4 $1/2C7$ $1/2C4$

sul tasto *mf* *p* *mp*

75 C7 $1/2C3$ 3 1 3

mp *p*

80 C2

3 2 3 1 4 1 0 1 4

mp

③ ① ② ⑤

85 1/2C2 Moderato ♩=83

0 3 2 4

mf *mp*

4 3 0 0

i m
4 1 2 3 1 4

④ ③ ④

mp

90

④ 1 2 2 1 0 2

95 sul tasto

sul tasto

sul tasto

2 4 0 3 2 4 0 1 4 0 0 1 2

① ① ①

6

100

nat. *mf*

sul pont. *f*

nat. *mp*

105

sul tasto *mp*

sul tasto *p*

110

nat. *mf*

nat. *mf*

rit. 116

mp

p

mp

Guitar I

Confesiones (Bambuco)

Fingered by: Alberto Morelli
www.albertomorelli.com.ar

Guitar Duet

Jaime Romero - (1980)

Moderato ♩=83

i m
4 1 2 3 2 3 4 *a m i m*
1 4 2 1 2

④ ② ② ③

mp

1/2C3 *m i*
1 2 *a* *m*
3 2 1

6

2

m m a m i m i
4 3 4 3 4 3 1 4 3

② ③

mp

1/2C5 *i m*
1 2 4 3 3 2 1

13

2

p

3

1

1

2

m f

1/2C3 *m i*
1 2 *a* *m*
3 2 1

20

4 1 4 2 1 2

sul tasto
m i m
4 1 3 4 2

② ③

mp

m i m nat.
1 4 4 2 0 1 2 0 2 1 3 4 1 3 4

26

2

3

0

3

②

①

1

3

4

C5
3 2 1 4 3

③ ④

mf

p

rit.
m i i
3 2 1 4 3

31

1 3 4 4 1 2

③

②

mp

1.

0 2 *C5*
1 1

1

2

p i m
3 1 4 2 4 1

⑤

⑤

Guitar I
Lento ♩=80

36 rit. ————

2. 1 2 1

1 3 3 2

② 4 ⑤ 3

C7 1/2C6 C7

i 2 1 4 2

mf espress. p i

40 1/2C4

2 4 1 2

3 3

1 3 4 4 C3

1/2C5

3 4 3 1 1

p i p m

sfz

44 rit. ————

1 4 1 0

p mp

48 Moderato ♩=80

dolce mp

4 1 3 1 1 4 2 2 1 3 2 4 0

52

12 7 12 ... 7 12

4 1 4 4 1 4

1/2C5 1/2C5

2 4 4

mf mp

56

1 1 1 1

2 2 3 3

1/2C3

mp

Guitar I

60 $1/2C2$ 1 4 1 4 2 1 4 2 C3

65 C7 1. 1 4 4 2 4 2 1 2 $1/2C5$ 3 4

69 C7 2 3 1 4 $1/2C7$ 1 2 3 4 $1/2C4$

75 3 0 3 4 2 1 2. C7 4 2 1 4

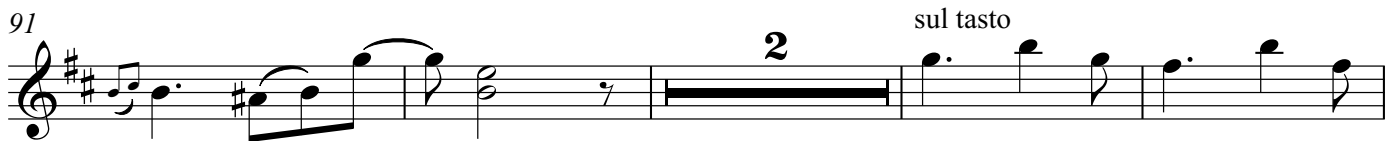
79 $1/2C3$ 3 1 3 C2 3 2 3 1 4

83 $1/2C2$ Moderato ♩=83 1 0 1 4 0 3 2 4

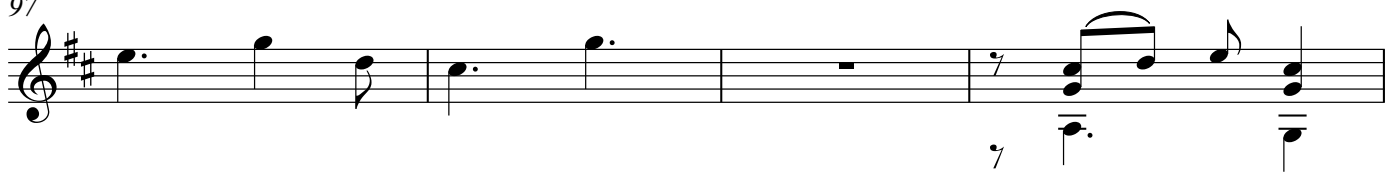
87



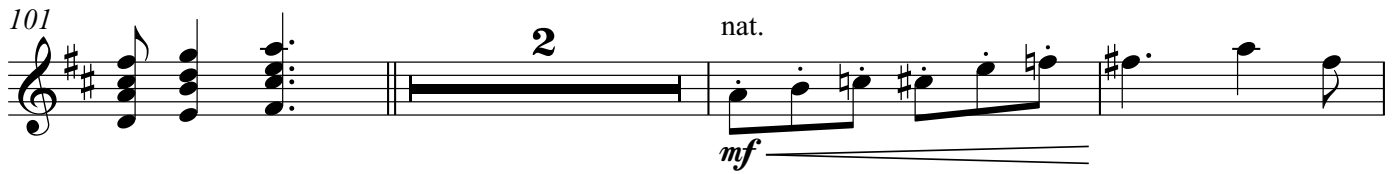
91



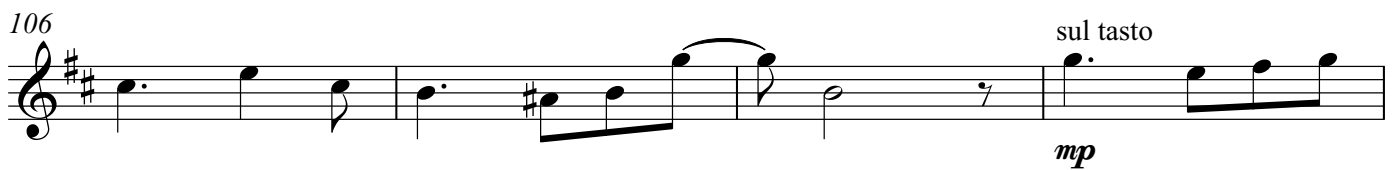
97



101



106



110



114

rit.

mp

Detailed description: This system contains measures 114 through 117. Measure 114 starts with a treble clef and a key signature of two sharps (F# and C#). The melody begins with a dotted quarter note G4, followed by an eighth note A4, and a quarter note B4. The bass line consists of a dotted half note G2. Measure 115 features a melody of quarter notes A4, B4, C#5, and D5, with a bass line of quarter notes G2, A2, and B2. Measure 116 has a melody of quarter notes E5, D5, C#5, and B4, with a bass line of quarter notes G2, A2, and B2. Measure 117 contains a melody of quarter notes G4, A4, B4, and C#5, with a bass line of quarter notes G2, A2, and B2. A 'rit.' marking is placed above the staff, and a 'mp' dynamic marking is at the end. A dashed line is drawn above the staff.

118

1
2
4
3

mp

Detailed description: This system contains measures 118 through 121. Measure 118 has a melody of quarter notes G4, A4, B4, and C#5, with a bass line of quarter notes G2, A2, and B2. Measure 119 features a melody of quarter notes D5, C#5, B4, and A4, with a bass line of quarter notes G2, A2, and B2. Measure 120 has a melody of quarter notes G4, A4, B4, and C#5, with a bass line of quarter notes G2, A2, and B2. Measure 121 contains a melody of quarter notes D5, C#5, B4, and A4, with a bass line of quarter notes G2, A2, and B2. A 'mp' dynamic marking is at the end. A dashed line is drawn above the staff.

Confesiones (Bambuco)

Guitar II
Fingered by: Alberto Morelli
www.albertomorelli.com.ar

Guitar Duet

Jaime Romero - (1980)

4 Moderato $\text{♩} = 83$

mf

6=D

mf

sul pont.

p

sul tasto

p

mf

mp

2

Guitar II

sul tasto

21 *1 3 4* *1* *0 4 2 3 ② 3*

25 *4 1* *C2* *3 0* *nat. 3 2 1*

29 *4 2 3* *4* *0 0 0* *4 2 0 4 2* *rit.*

33 *1.* *2 1 2 0* *④* *2.*

37 *Lento* ♩=80 *mp* *basso stacatto*

40 *4 4* *3 3* *p ad libitum*

44 VII IV II rit. Guitar II Moderato ♩=80 3

51 1 2 4 0 C3

55 C2 C3 3 4

60 2 1 0 1 0 0 2 4 3 2 0 1/2CV 1/2CIV

64 2 3 3 2 1. 1 2 4 1/2CV 0 2 4

sul tasto 69 2 4 3 C2 nat. 3

Guitar II

73 3

74 75 76

p

77 2.

78 79 80

81

82 83 84

85 Moderato ♩=83

86 87 88

mf *mp*

90

91 92 93

94 sul tasto

95 96 97

98

0 1 2

102

sul pont.

nat.

2 1 0 2 2

f *mp*

106

sul tasto

p

110

nat.

mf

114

rit.

4 2 0

1

p

118

4 1

3 2

2 3 0

mp